

Balance – kick off



- DIFRES´ input on nursery habitats in Kattegat

Claus R. Sparrevohn

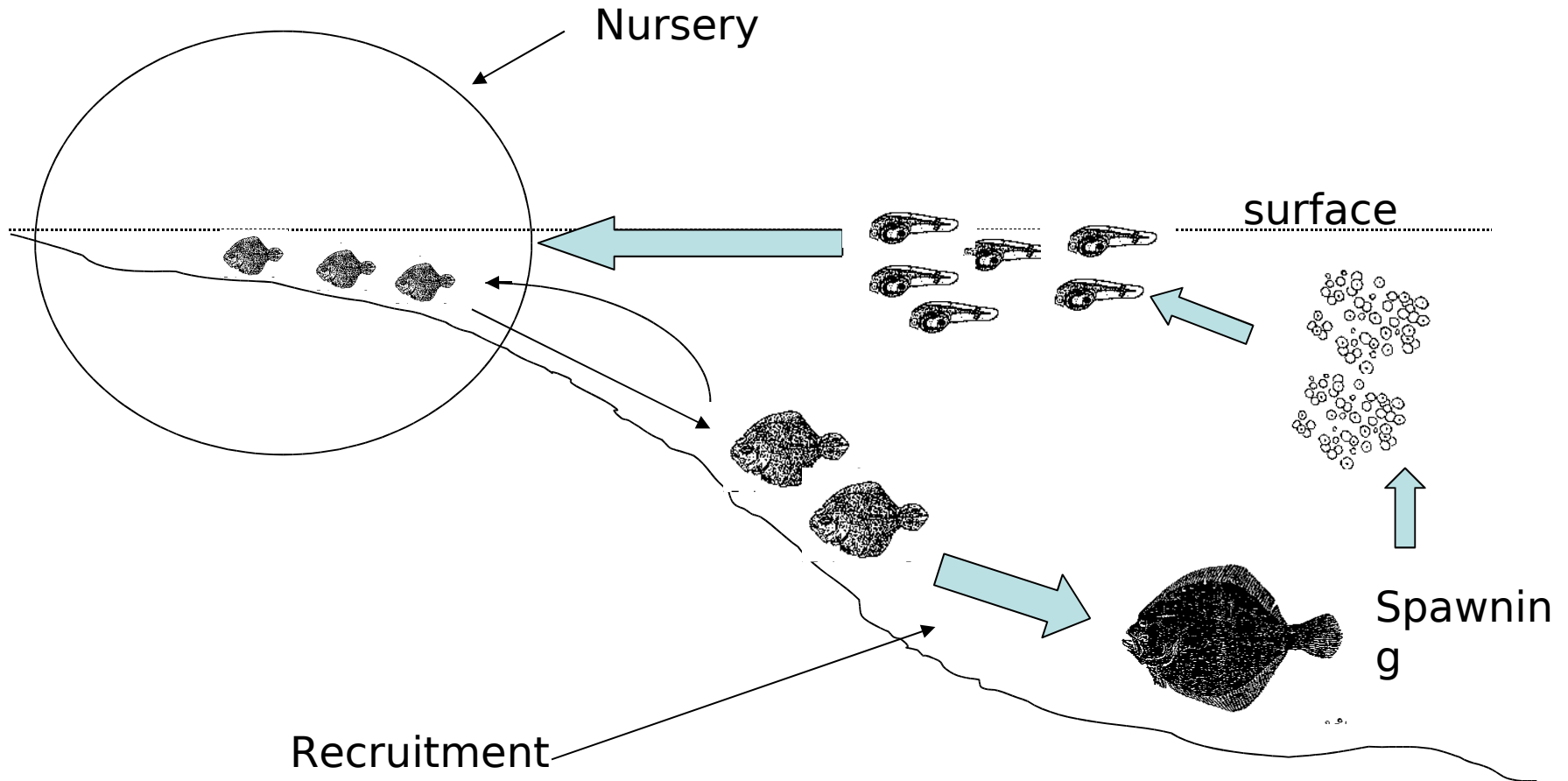
Josianne Støttrup

Else Nielsen

DIFRES / HOEK

Charlottenlund, Copenhagen

Nursery habitats

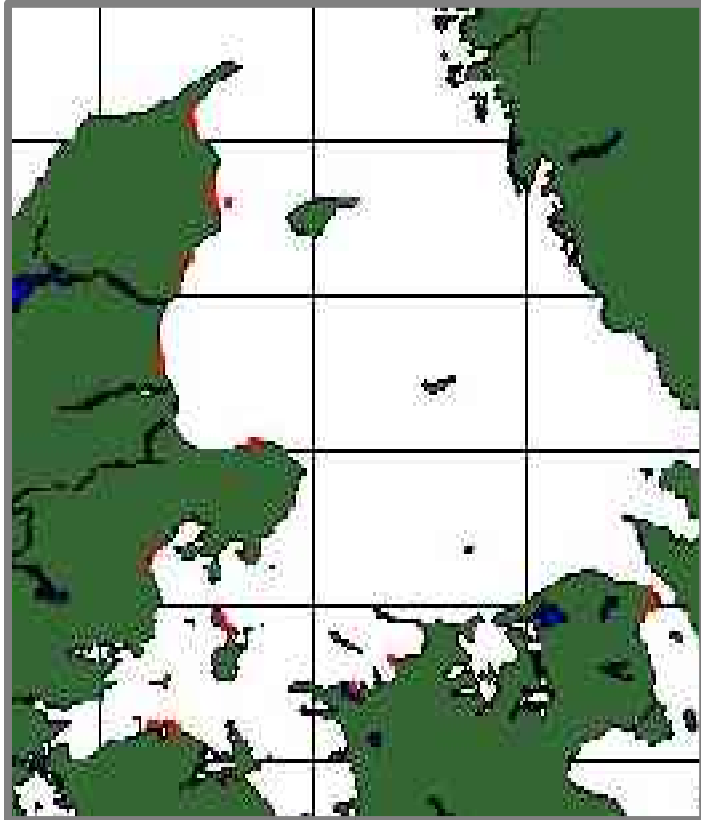


Milestones (tasks)

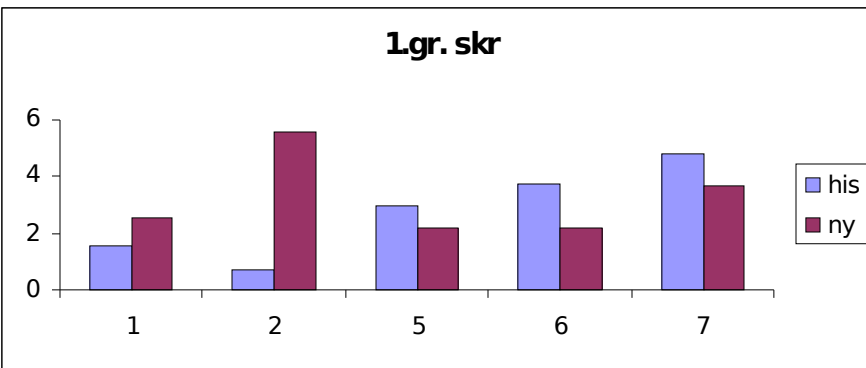
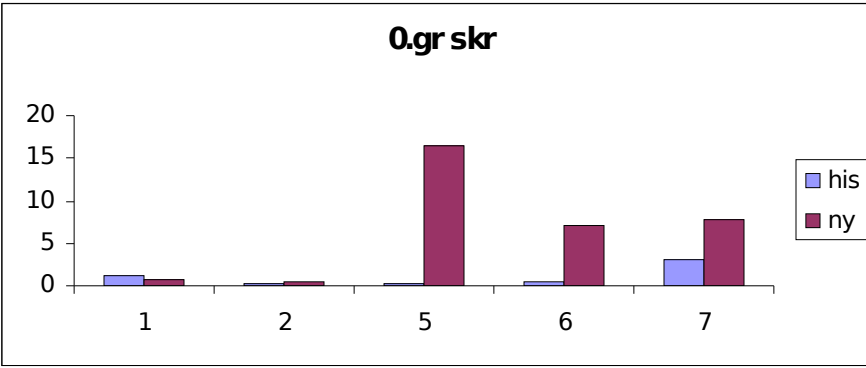
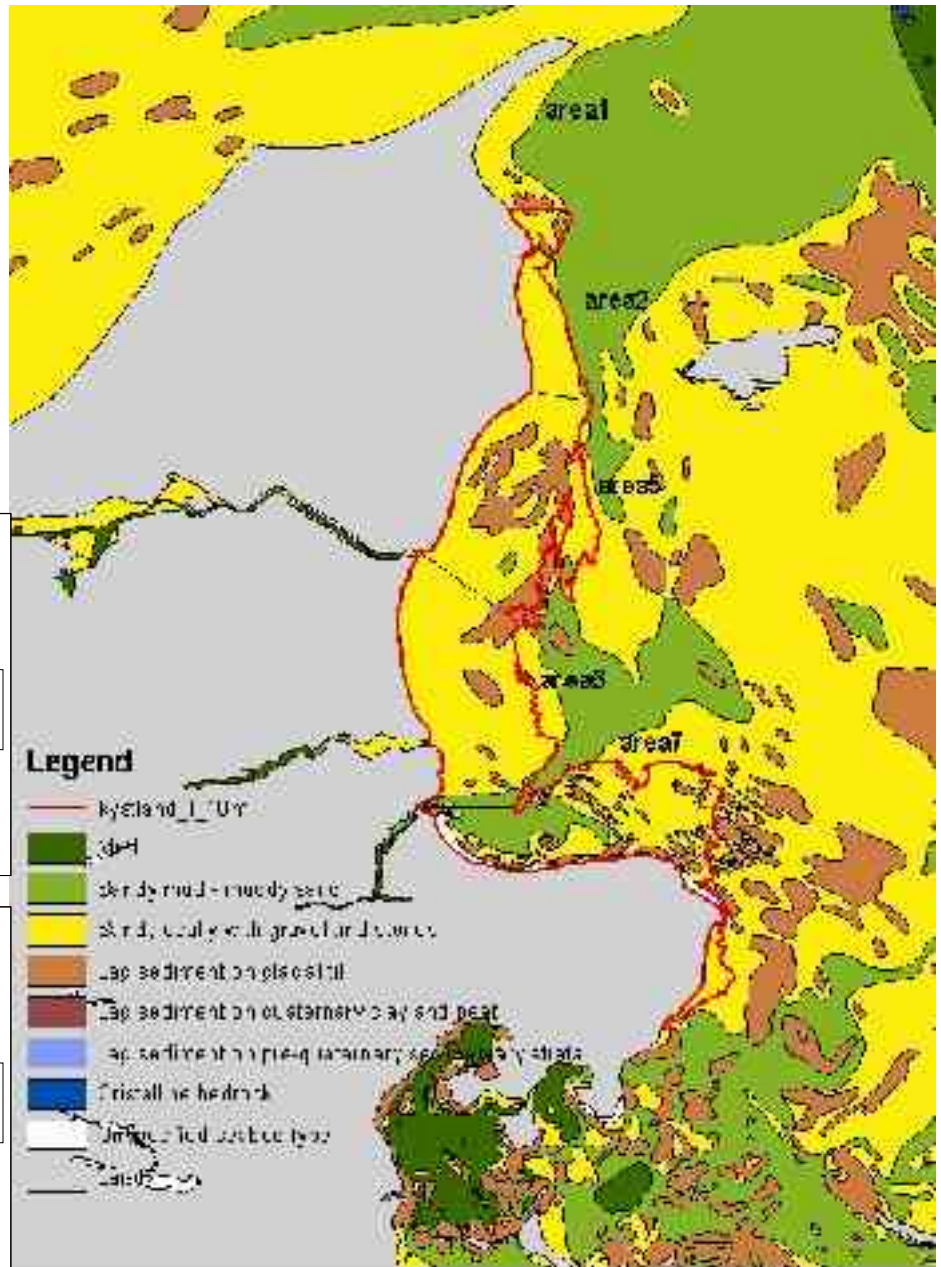
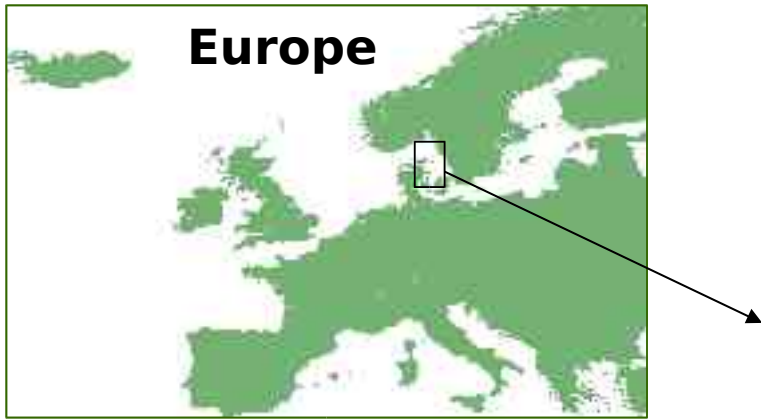


- Identification of key fish nursery habitats (WP1)
- Strengthening the linkage between physical and biological parameters (WP2)
- Predictive model (WP2)
- Evaluation of the “blue corridors” concept (WP3)

what's available



- Fish data collected with a Young fish trawl
 - Depths 1.5-3 meter
 - Season: Juli august
 - Periode available:
 - 1950:1972 (historical)
 - 1985:2004 (present)



Physical parameters



- Vind (direction, strength)
- Current
- Temperature
- Vegetation coverage
- Nutrition load