

# BALANCE

## Session 3: Marine habitat mapping in the Baltic Sea region

**BALANCE Conference**

25-26 October 2007

Copenhagen, Denmark

Denmark  
Estonia  
Finland  
Germany  
Latvia  
Lithuania  
Norway  
Poland  
Sweden

# Background

Sustainable management of environmental resources requires information on the asset being managed!



# Habitat Mapping in the Baltic Sea

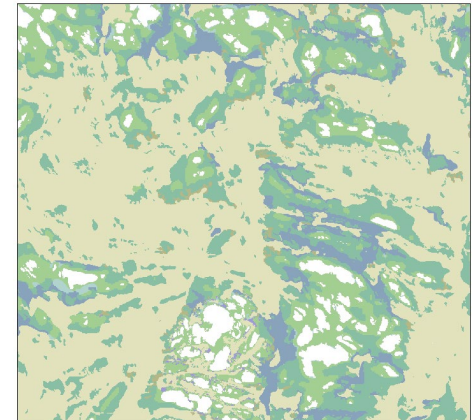
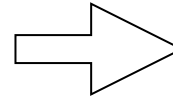
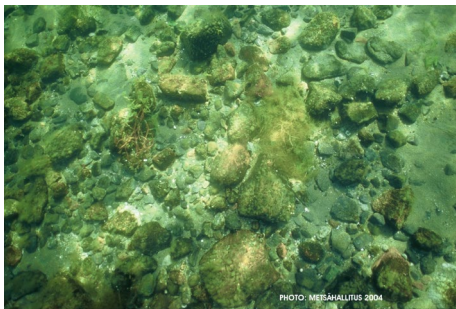
Petersen's Baltic marine communities  
1913-18:

- *Over 1000 samples*
- *7 infauna communities*
- *5 epifauna communities*
- *3 epiflora communities*
- *Several pelagic communities*
- *Mainly in the Danish Straits*



# Habitat Mapping in the Baltic Sea

## Biological units onto a map?



# Definitions

---

## **Habitat *sensu* Darwin 1859**

*'The locality in which a plant or animal naturally lives'*

## **Community *sensu lecto***

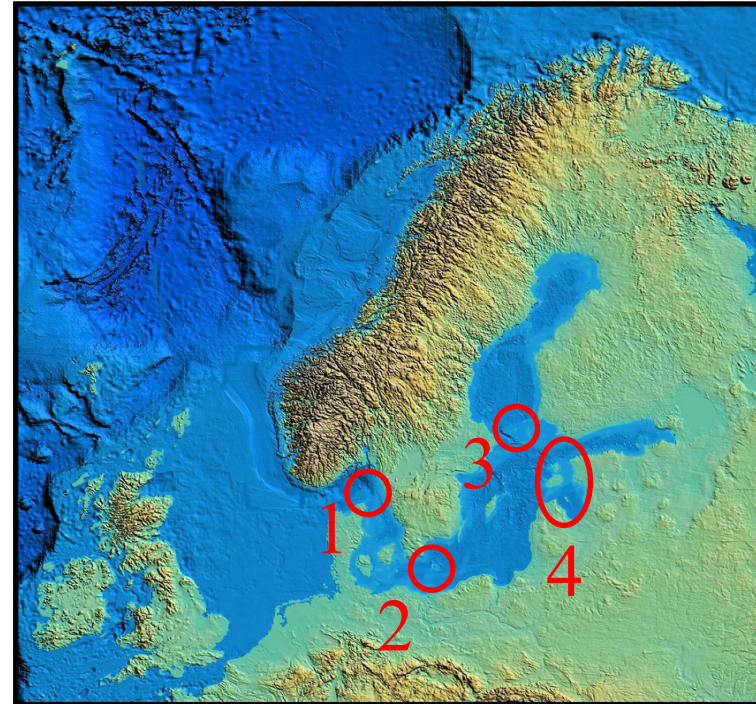
Flora and fauna species consistently occurring together in assemblages - but not necessarily interdependently so.

## **Biotope (i.e. habitat *sensu lecto* as used in MESH, BALANCE)**

The place where an assemblage is found, defines by the abiotic characteristics of the environment and the associated assemblages of species.

# Aims of WP2 Habitat mapping

- *Agree on an approach to identification and mapping of selected BS habitats*
- *Produce maps to demonstrate various methodologies in the 4 pilot areas*
- *Provide material for WPs 3 & 4*



# Presentations

- 15:15 **Mapping of NATURA 2000 habitats**  
Sandra Wennberg, Metria Miljöanalys
- 15:35 **Where is the fish? Habitat modelling and applications**  
Ulf Bergström, The National Board of Fisheries, Institute of Coastal Research
- 15:55 **Modelling of submerged aquatic vegetation**  
Martin Isaeus, AquaBiota
- 16:15 **Modelling of exposed reefs in SE Baltic coastal waters**  
Darius Daynus, CORPI
- 16:35 **3D-modelling of pelagic cod habitats in the Baltic Sea**  
Stefan Neufeldt & Kerstin Geitner, The Danish Institute for Fisheries Research
- 16:55 **Synthesis**  
Grete Dinesen, The Danish Spatial and Environmental Planning Agency
- 17:10 **General discussion**

